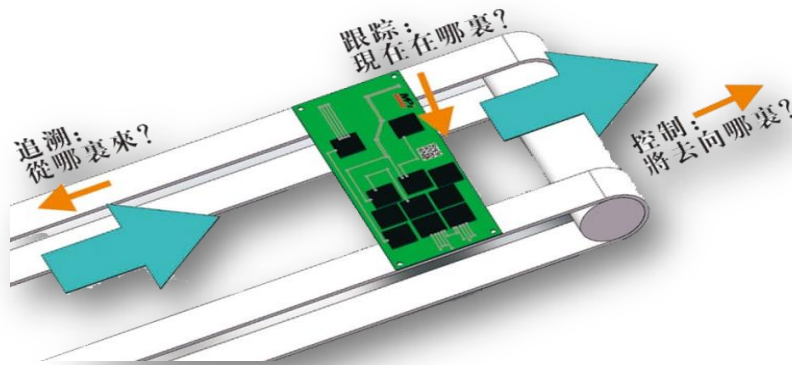


# **X-Series Online Laser Engraving Machine Product Introduction**

# On-line Laser Marking Machine

Laser Marking system to realize data collection, marking, read and control integrated equipment.  
Suitable for Industry marking celerity trace automation solutions.



# CO2 Laser

Meet the Needs of Different Products

Organic materials

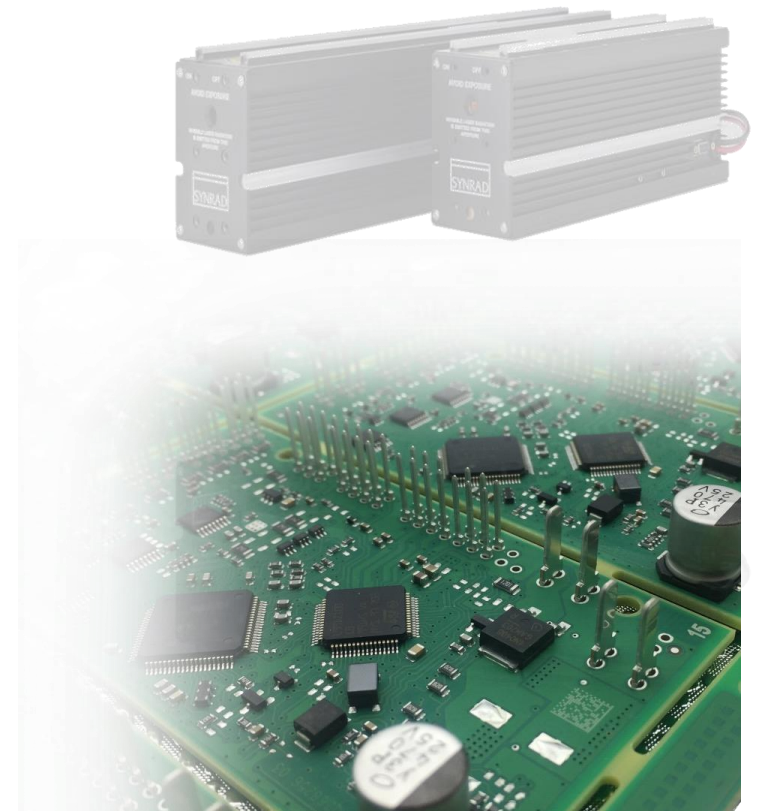
Plastic and film

Thin metal and tin foil

Others

**A variety of power, suitable for different scenarios**

Air Cooling: 5W、10W



# Laser performance

Industry benchmark for low power industrial grade CO2 lasers. The perfect solution for tagging and coding applications, suitable for places where end users need smaller machines to achieve compact factory settings.

- \*RF

- \*RF integration

- \*Low power consumption

- \*Provide a minimum sealed metal tube CO2 laser

## Product Feature

The intelligent camera realizes automatic correction and engraving, the visual image processing system can accurately recognize Fiducial Mark and Bad Mark and the Flap system can realize the double-sided two-dimensional code to type and read simultaneously.

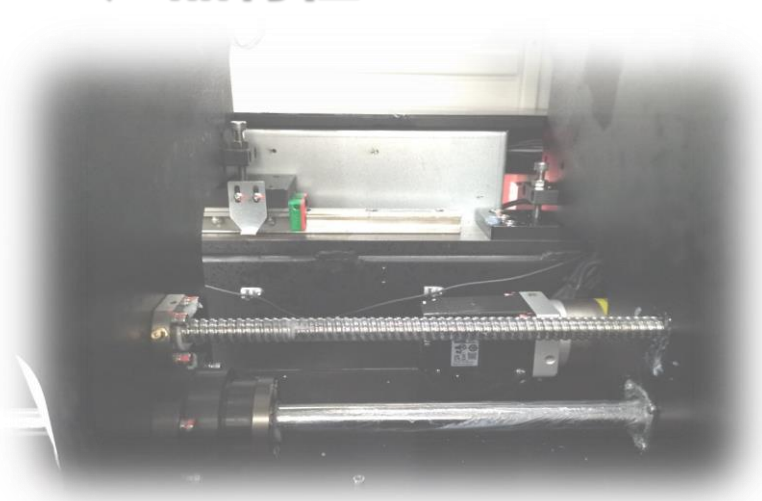


# Product Feature

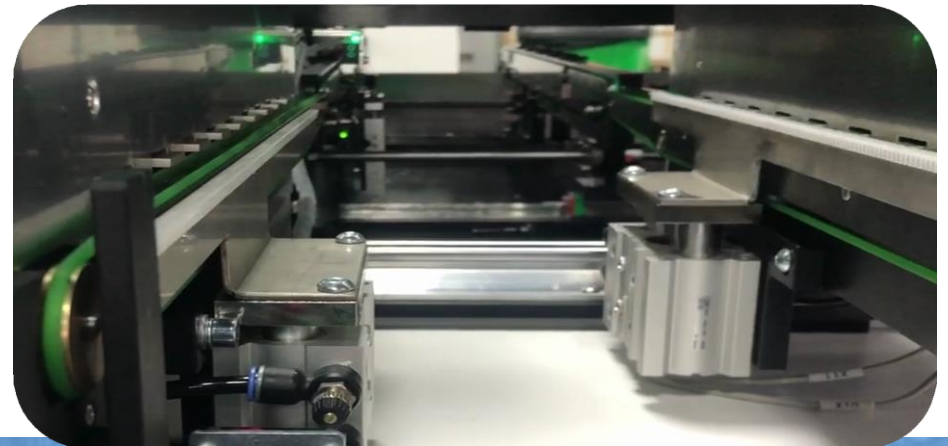
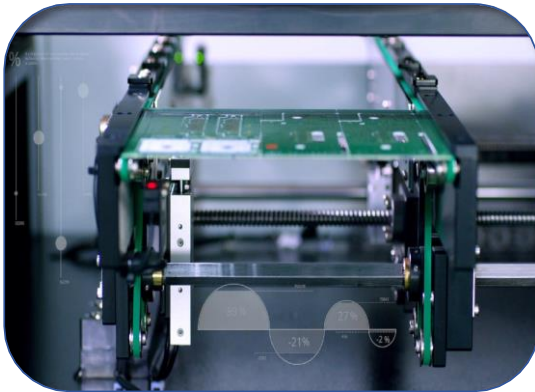
Japan Servo motor : Make the equipment more stable, more reliable, continuous operation for 24 hours.



## 产品特点 Feature



XY drive unit: The XY screw rod of high standard cast steel body provides strong guarantee for the high-speed movement and accurate marking of the laser head.



# Product Feature

**Purification system, the equipment has its own  
Smoke purification system, external smoke clean.**

**Reduce the dust damage to the laser, effectively  
Ensure that the production of odor-free.**



# Product Feature



Self-developed software, support a variety of format files, free upgrade of the standard system for life, can also be customized according to customer production needs development of various application systems.

The Webest Smart Management System 2018 has a soft-touch certificate.



## Product Feature

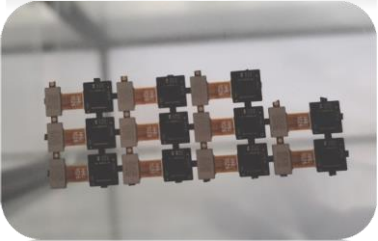
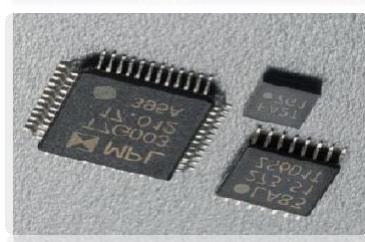
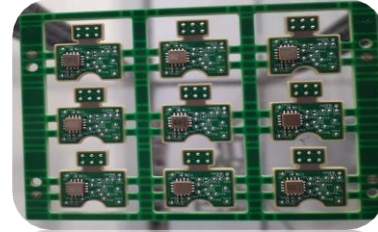
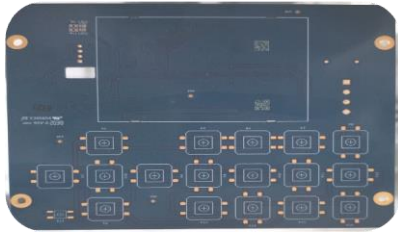
The production management system and the engraving machine system can be Compatible with the docking traceability system and the equipment can directly receive MES instruction ticket on production operation. You can also generate your own QR code according to the specified rules and upload it synchronously after engraving.



# Process comparison

Category	Laser marking machine	Label	Spurt code
Traceability reliability	High (permanent mark)	Low (easy to remove, replace)	Low (easy to remove, replace)
Supplies	None	High Temperature label, printing ink (higher cost)	Inkjet ink, nozzle cleaning agent
Environmental capacity	No pollution	Label consumption, chemical ink pollution	Chemical ink pollution
Mark effect	Fine (minimum size 0.8 mm)	Rough	Rough
Mark location requirements	No need to reserve, according to the request to find space	Need to reserve a large space	Need specific adhesion surface (white oil) , reserve a large space
Scope of application	PCB, PCBA, metal, non-metal, etc.	PCB only	The surface of a particular requirement only
Principle of marking	Do not touch the carved surface	The contact surface has a pressure effect	Ink jet contact surface
Artificial efficiency	Efficient production (0.2 seconds per unit)	Extremely inefficient	Less efficient than radium carving

# Case



# Product Feature



# Specification

Product Name	CO2 laser marking machine	CO2 laser marking machine	CO2 laser marking machine	CO2 laser marking machine	CO2 laser marking machine	CO2 Flap laser marking machine	CO2 Flap laser marking machine	CO2 Flap laser marking machine
Model No.	X1	X4	X4-P	X5	X5-P	X4-T	X4-PT	X5-KT
PCB Marking mode	single-sided Marking					Double-sided Marking		
PCB size	50*50-450*400mm	50*50-450*400mm	50*50-450*400mm	50*50-500*400mm	50*50-510*460mm	50*50-450*400mm	50*50-450*400mm	50*50-530*510mm
Laser type	CO2	CO2	CO2	CO2	CO2	CO2	CO2	CO2
Laser wavelength	10.6um							
Laser electricity	0.15mm	0.11mm	0.11mm	0.11mm	0.11mm	0.11mm	0.11mm	0.08mm
Laser power	10W	10W	5W	10W	5W	10W	5W	30W
Cooling way	Air cooling							
Bar Code Size	Min.2.8mm X 2.8mm    Max. 4mm X 4mm							
ESD/Dust	Fume Collector in build							
PCB Mode	Clamping							
Way to work	XY axis move							
Support Marking Type	1D ,2D Bar Code,Text graphics							
Cycle Time	< 1S, < 0.3S/ Transfer < 1 seconds,Marking Time < 0.3seconds							
Transport Direction	L→ R or R→ L							
Conveyor Height	900±20mm							
Communication methods	TCP、FTP、 webservice TPC、 FTP, webservice and User specified protocol							
Input voltage	AC 200-230V 10A 50/60HZ							
Air pressure	0.5MPa							
Overall dimensions	900*1450*1650mm	900*1450*1650mm	900*1450*1650mm	1100*1570*1650mm	1100*1570*1650mm	1000*1550*1750mm	1000*1550*1750mm	200*1750*1800mm
Equipment weight	650KG	650KG	650KG	750KG	750KG	750KG	750KG	850KG