

## GODZILA PTE LTD/ Singapore

### Equipment overview

### Offline PCBA water based cleaning machine

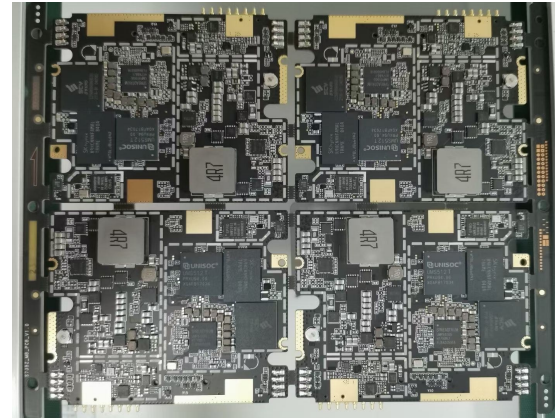
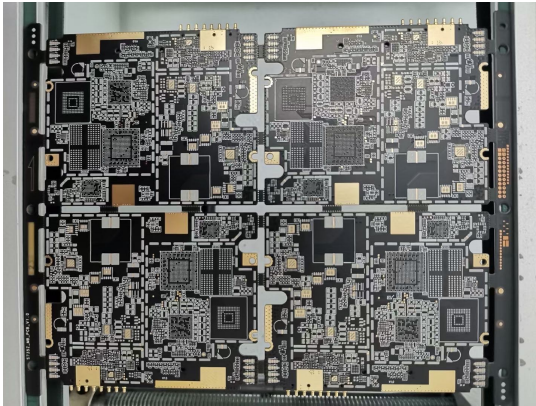


### Offline PCBA Cleaning machine: Model : GH610

For small-scale PCBA flux cleaning equipment. A typical batch cleaning process achieves the entire cleaning, rinsing, and drying process within a single cleaning chamber. It enhances cleaning quality to meet the needs of multiple PCBA types, using the most advanced cleaning technology in the industry to achieve 100% cleanliness and environmental protection. The machine consists of a cleaning system, rinsing system, drying system, and filtration system. Powered by electricity and air, operators manually place the PCBA into the cleaning chamber, set the cleaning, rinsing, drying, and other related parameters on the touch screen, then click start. The PCBA will be automatically cleaned, rinsed, and dried. When the preset cleaning process is complete, it automatically stops and resets, preparing for the next workflow. This machine greatly facilitates the cleaning of PCBA by operators, significantly improving production efficiency and quality. It is a new, high-performance fully automatic cleaning device. The equipment uses water-based liquids or DI water as the cleaning agent, posing no safety hazards and causing no harm to personnel.

## Offline PCBA Cleaning machine, Model : GH610

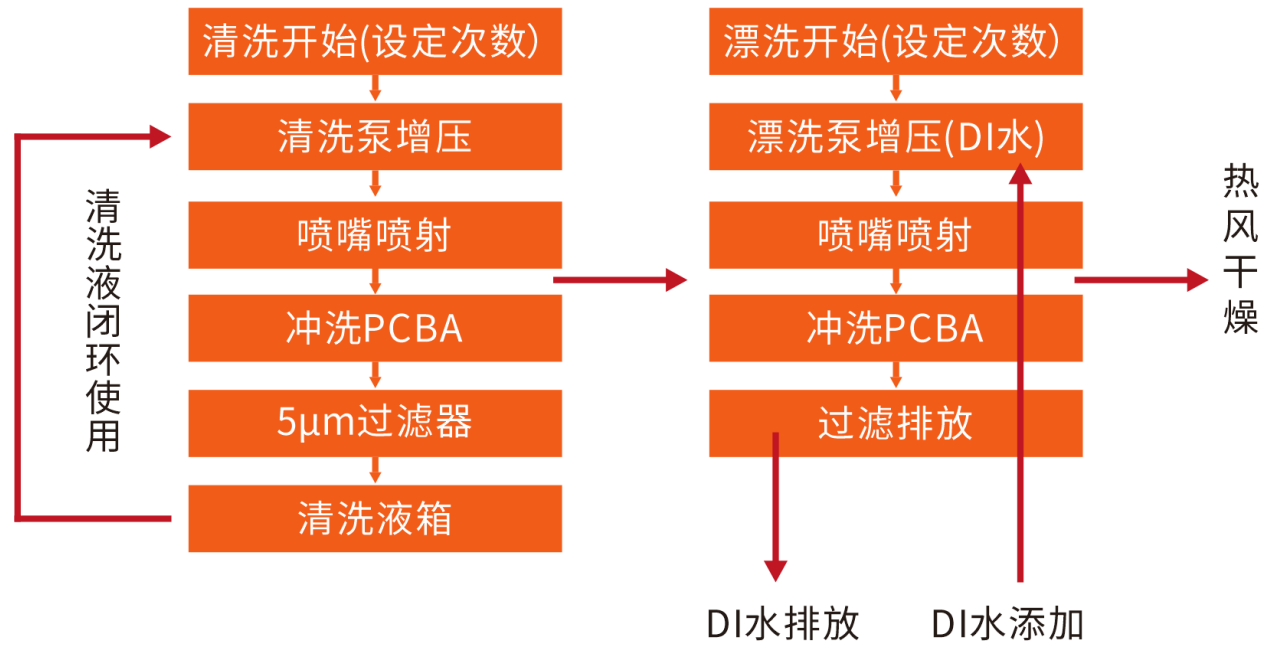
Cleaning object:



Misprinted board PCBA

## Offline PCBA Cleaning machine: Model: GH610

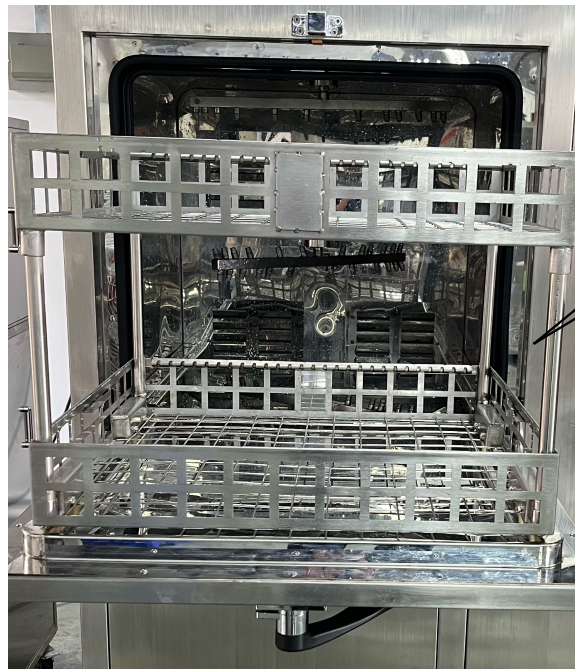
### Cleaning process and principle



## Offline PCBA Cleaning machine, Model: GH610

### Product structure and function

Super large cleaning capacity: 610mm (L) \*560mm (W) \*100mm (H) double layer design, to meet the larger product size and higher cleaning capacity;



Clean the cavity solid figure

## Offline PCBA Cleaning machine, Model: GH610

### Product structure and function

The placement of the PCBA is shown in the figure



## Offline PCBA Cleaning machine, Model: GH610

### Technical specifications

设备参数			
清洗内腔尺寸	L690xW620xH715(mm)	喷淋系统	上下360度旋转喷淋清洗
清洗篮尺寸	L610xW560xH100(mm)双层设计	清洗喷射压力范围	0.3~0.6(Mpa)
浓缩液槽容量	30L	喷淋槽容量	17L~23L
稀释液槽容量	70L	清洗篮负载	100KG
粗洗时间	3~8分钟（参考）	漂洗时间	1~2分钟/次，1~10次（按要求设定）
干燥时间	20~30分钟（参考）	液体加热温度	~75P
内腔温度补偿功率	6KW	热风烘干温度室温	~99P
溶剂槽加热器功率	9KW	烘干加热器功率	6KW
卧式喷淋泵功率	5.5KW	电阻率仪监测范围	0~18M $\Omega$ ·cm
气源	0.4~0.7Mpa	进出水口	1寸快结式接口
电源	AC380V 3P,50/60HZ 27KW	机器重量	400KG
机器尺寸	L1200xW1100xH 1780 $\pm$ 30(mm)	排气口尺寸	$\Phi$ 100*30H( mm )
3级过滤系统	1级过滤网(过滤杂质及标签)2级过滤网(过滤小颗粒及锡膏)3级过滤芯5um(过滤小颗粒及松香)		
一次清洗数量	以尺寸为 L200 $\times$ W100 $\times$ H20(mm)的 PCBA 板来计算，每批次可以洗 100~160pcs		



## function Introduction

## Offline PCBA Cleaning machine, Model: GH610

### Operating system:

Operation interface: intuitive and simple. Control the optimal process parameters and cleaning cycle through touch screen clicks to set up. After training by our after-sales engineers, general operators can quickly master software programming and cleaning process operations within a short time. They can rapidly edit and store various cleaning programs according to the cleaning requirements of different PCBA: solvent temperature setting, cleaning time setting, rinse time/number setting, drying time/temperature setting, conductivity monitoring, etc. The entire system is controlled by a PLC to automatically adjust equipment parameters, allowing one-click operation for real-time monitoring of all operational data during equipment operation, facilitating data monitoring and cleaning quality management.

The screenshot displays the touch screen interface of the GH610 Offline PCBA Cleaning machine. The interface is organized into several sections:

- Top Bar:** Includes a "菜单" (Menu) button on the left and a "报警解除" (Alarm Cancel) button on the right.
- Program Selection:** A "程序" (Program) dropdown menu is set to "PCBA 1", with a "确定" (Confirm) button next to it.
- Parameter Settings:** A row of five input fields for: "稀释液箱" (Dilution Tank) at 0 °C, "喷淋液箱" (Spray Tank) at 0 °C, "烘干温度" (Drying Temperature) at 0 °C, "漂洗次数" (Rinse Count) at 0 次, and "电阻率" (Resistivity) at 0.00 MΩ/cm.
- Time Settings:** A row of three input fields for: "清洗时间" (Cleaning Time) at 0.0 S, "漂洗时间" (Rinse Time) at 0.0 S, and "烘干时间" (Drying Time) at 0.0 S.
- Control Buttons:** A large green "开始运行" (Start Operation) button and a red "停止运行" (Stop Operation) button are on the left. On the right, there are three green buttons: "自动条件满足" (Automatic Condition Satisfied), "运行中" (Running), and "运行完毕" (Operation Complete).
- Process Flow Diagram:** A vertical flow diagram on the right shows three stages: "清洗液箱" (Cleaning Tank), "浓缩液箱" (Concentration Tank), and "喷淋液箱" (Spray Tank), each with upward and downward arrows indicating flow direction.
- Bottom Status Bar:** A green bar at the bottom displays three counters: "稀释液过滤器使用次数" (Dilution Liquid Filter Usage Count) at 0, "排放过滤器使用次数" (Discharge Filter Usage Count) at 0, and "自动循环使用次数" (Automatic Cycle Usage Count) at 0.